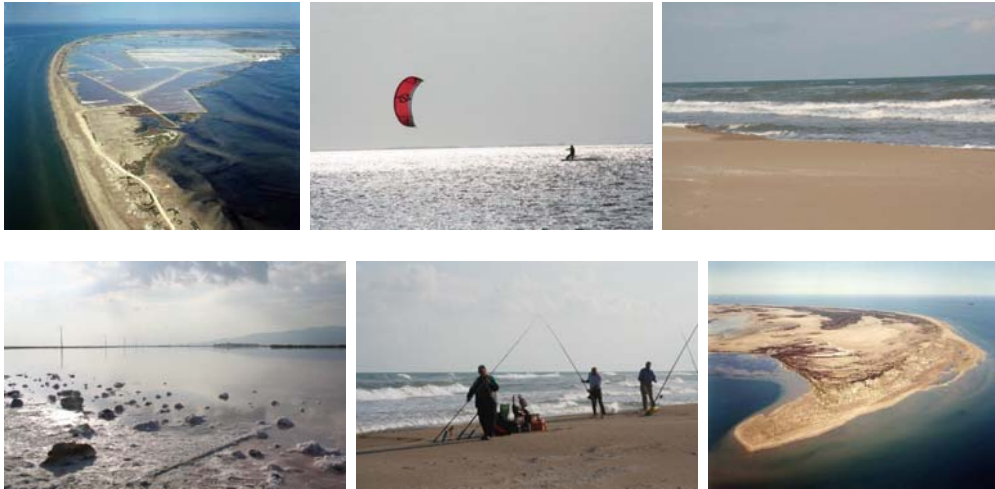




Route Map

Arboleda - Playa El Trabucador - Salinas la Trinitat



 **Camí del Racó de Pilarde Gaspa**
43870, Amposta, Spain
Drive: 29.4 km (about 1 hour 6 mins)

- | | |
|---|--------------------------|
| 1. Head north from Camí del Racó de Pilarde Gaspa | 1.0 km
3 mins |
| ➔ 2. Turn right at Lligallo de la Ràpita | 0.3 km
1 min |
| 3. Continue on Camí del Lligallo Forcheron | 0.4 km
1 min |
| ➔ 4. Turn right at N-340 | 2.9 km
4 mins |
| ➔ 5. Bear right onto the ramp | 0.5 km
1 min |
| ➔ 6. Bear right at N-340a | 13 m |
| ← 7. Turn left at TV-3406 | 0.5 km
1 min |
| ➔ 8. Turn right at TV-3408 | 2.2 km
4 mins |
| ← 9. Turn left | 5.2 km
11 mins |
| 10. Continue on Carretera de Sant Carles de la Ràpita a Poblenou del Delta | 2.3 km
5 mins |
| ➔ 11. Bear right at Carretera de les Salines de Poblenou del Delta | 6.0 km
12 mins |
| ➔ 12. Turn right at Camí del Trabucador | 7 m |
| 13. Continue | 8.0 km
23 mins |

 **Salines de la Trinitat**
St Carles de la Ràpita, Spain

These directions are for planning purposes only. You may find that construction projects, traffic, or other events may cause road conditions to differ from the

Overview



Start



End

